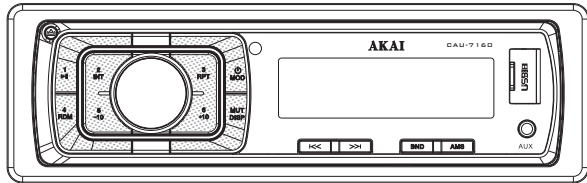


AKAI

Makes Sense

CAU-7160

INSTRUCTION MANUAL



USB/SD/MMC/PLAYER

INSTALLATION

PRECAUTIONS

Choose the mounting location where the unit will not interfere with the normal driving function of the driver.

Before finally installing the unit, connect the wiring temporarily and make sure it is all connected up properly and the unit and the system work properly.

Use only the parts included with the unit to ensure proper installation. The use of unauthorized parts can cause malfunctions.

Consult with your nearest dealer if installation requires the drilling of holes or other modifications of the vehicle.

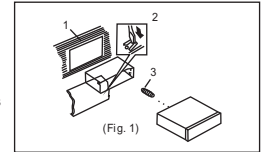
Install the unit where it does not get in the driver's way and cannot injure the passenger if there is a sudden stop. Like an emergency stop.

Avoid installing the unit where it would be subject to high temperature, such as from direct sunlight, or from hot air, from the heater, or where it would be subject to dust, dirt or excessive vibration.

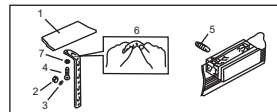
DIN FRONT-MOUNT (Method A)

Installing the unit

1. Dashboard
2. Holder
After inserting the holder into the dashboard, select the appropriate tab according to the thickness of the dashboard material and bend them inwards to secure the holder in place. (Fig. 1)

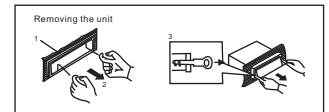


3. Screw



(Fig. 2)

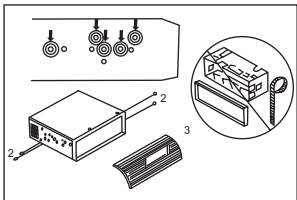
1. Dashboard
 2. Nut (5mm)
 3. Spring Washer
 4. Screw (5 x 25mm)
 5. Screw
 6. Strap
- Be sure to use the strap to secure the back of the unit in place. The strap can be bent by hand to the desired angle.



(Fig. 3)

1. Frame
2. Insert fingers into the groove in the front of frame and pull out to remove the frame. (When reattaching the frame, point the side with a groove downwards and attach it.)
3. Lever
Insert the levers supplied with the unit into the grooves at both sides of the unit and shown in figure until they click. Pulling the levers makes possible to remove the unit from the dashboard.

INSTALLATION



Fastening the unit to the factory radio mounting bracket:

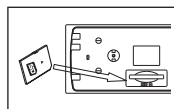
1. Select a position where the screw holes of the bracket and the screw holes of the main unit become aligned (are fitted), and tighten the screws at 2 places on each side. Use either truss screws (5 x 5mm) or flush surface screws (4 x 5mm).
2. Screw
3. Dashboard or Console

DIN REAR-MOUNT (Method B)
Installation using the screw holes on the sides of the unit.

NOTE: The mounting box, outer trim ring, and half-sleeve are not used for method B installation.

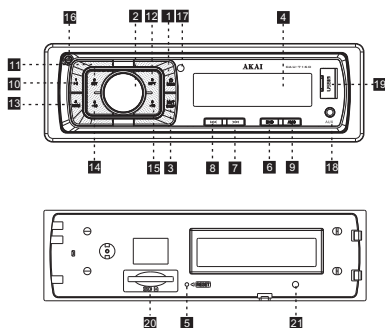
INPUT THE SD CARD

The SD oblique angle keeps Rightward exposure. put into the SD slot and press it again to eject.



GENERAL OPERATIONS

FRONT PANEL LAYOUT



- 1 Power/MOD Button
- 2 Volume/Sel Button
- 3 Display/Mute Button
- 4 LCD Display
- 5 Reset Button
- 6 Band switch/ID3 select
- 7 Tune Seek & Track forward Button
- 8 Tune Seek & Track reverse Button
- 9 Automatically memory storing
- 10 Play/pause & Preset Button 1
- 11 Intro & Preset Button 2
- 12 Repeat & Preset Button 3
- 13 Random & Preset Button 4
- 14 Preset Button 5
- 15 Preset Button 6
- 16 Release Button
- 17 Remote Control sensor
- 18 AUX IN JACK
- 19 USB connector
- 20 SD/MMC slot
- 21 Flashing LED

GENERAL OPERATIONS

GENERAL OPERATIONS

POWER /MOD conversion

2. Under power off status, short press is power on, Under power on status, short press is switching mode, long press is power off.

SOUND ADJUSTMENT

Turn on (2) can adjust the desired volume quality. Press SEL button (2) will change in the following order. Option:



VOLUME

Adjust volume level by using VOL/SEL (2) knob. Turn the VOL knob to left to decrease the sound level, turn the VOL knob to right to increase the sound level. Note: The unit is initially set to volume mode.

BASS

Press VOL/SEL button(2) one time. Adjust bass level by using VOL/SEL(2) Knob.

TREBLE

Press VOL/SEL button(2) two times. Adjust treble level by using VOL/SEL(2) Knob.

BALANCE

Press VOL/SEL button(2) three times. Adjust sound balance between left and right speakers by using VOL/SEL(2)Knob.

FADER (optional)

Press SEL button(2) four times. Adjust sound balance between front and rear speakers by using VOL/SEL(2)Knob.

SELECT MENU

Press VOL/SEL button for several seconds, selecting menu is activated as cyclical mode of following function for use's selection:



Press VOL/SEL button shortly and turn VOL button to right or left to select different menu mode.

EQ OFF/ON

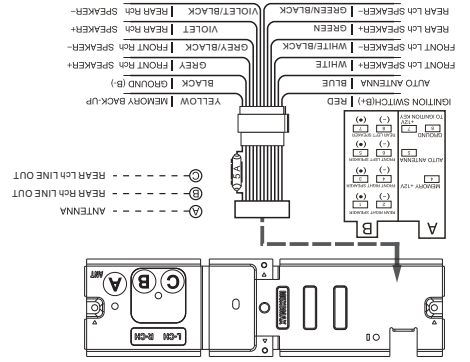
Select "EQ ON" POP -> CLASS -> ROCK -> EQ OFF menu male.

LOUD ON/OFF MODE

In loud on mode the bass and treble response will be boosted.

STEREO/MONO

When FM station are weak and are disturbed. Listening can be improve by selecting MONO.



ADDITIONAL INFORMATION

Specifications subject to change without notice

Remarks	
Sensitivity (S/N-20dB):	IF
Frequency Coverage (KHz):	520 - 1620KHz
AM Radio	
Stereo Separation:	>30dB
Sensitivity (S/N-30dB):	IF
Frequency Coverage (MHz):	87.5 - 108MHz
FM Radio	
Frequency Response:	20Hz - 20KHz
Channel Separation:	More than 60dB
Signal to Noise Ratio:	More than 60dB
USB/SD MUSIC Player	
Treble (at 10K):	+10dB / -10dB
Bass (at 100Hz):	+10dB / -10dB
Tone Controls	
Current Drain:	5A
Chassis Dimensions:	178 x 130 x 50mm (W x D x H)
Maximum Output Power:	4 X 25W
Load Impedance:	4 ohms
Power Supply Requirements:	DC 14.4V "==" , Negative Ground

SPECIFICATION

LOCAL/DX
 "LOCAL" position in areas with strong signals to let radio stop at only strong stations during manual turning select distant position in areas with weak signals to listen to all stations.

AREA SETUP
 In Radio mode, Press SEL button for several seconds, LCD will be show from BEEP ON → AREA USA/EUR, AT AREA USA/EUR, You can use VOL +/- to select the AREA frequency.
 Note: *On Remote Control

RADIO OPERATIONS
 Short press "DISP" button to turn on the mute, Press "DISP" again to turn off the mute.
 Long press "DISP", LCD screen shows clock "00:00". Short press "DISP", flashes, rotate "VOL +/-" to adjust the minute, if there is no operation within 5 seconds, the unit will memorize the current time and return to current mode.

RESET
 RESET button (5) is placed on the housing and must be activated with either a ball point pen or thin metal object. (Do not use sharp object to avoid damaging the unit.). The RESET button (5) is to be activated for the following reasons:
 - Initial installation of the unit when all wiring is completed.
 - All the function buttons do not operate.
 - Error symbol on the display.

BAND SELECTION
 At tuner mode, press BAND button (6) to select the desired band. The reception band will change in the following order:
 FM1 → FM2 → FM3 → MW1 (AM1) → MW2 (AM2)

STATION SELECTION
 During radio mode, Press "SEEK ◀" or "SEEK ▶" buttons shortly to automatically search a station, Press "SEEK ◀" or "SEEK ▶" buttons more than 1 second is operated as manual turning mode.

RADIO OPERATIONS
 Press button (11): During INTRON, INT indicator comes on and begins playing the first 10sec of each song, until the last song is played, it begins playing the entire track from where INT started
 Press button (10) pause function is activated. Music track play time INDICATOR flashes. Press it again to resume palying, press it more than 1 second is TOP function.
 - Error symbol on the display.

RESET
 RESET button (5) is placed on the housing and must be activated with either a ball point pen or thin metal object. (Do not use sharp object to avoid damaging the unit.). The RESET button (5) is to be activated for the following reasons:
 - Initial installation of the unit when all wiring is completed.
 - All the function buttons do not operate.
 - Error symbol on the display.

BAND SELECTION
 At tuner mode, press BAND button (6) to select the desired band. The reception band will change in the following order:
 FM1 → FM2 → FM3 → MW1 (AM1) → MW2 (AM2)

STATION SELECTION
 During radio mode, Press "SEEK ◀" or "SEEK ▶" buttons shortly to automatically search a station, Press "SEEK ◀" or "SEEK ▶" buttons more than 1 second is operated as manual turning mode.

GENERAL OPERATIONS

RADIO OPERATIONS

AUTOMATICALLY MEMORY STORING & PROGRAM SCANNING
 -Automatically Memory Storing
 Press AMS(MP3) button (9) for several seconds, the radio searches from the current frequency and checks the signal strength until one cycle search is finished.
 And then 6 strongest stations are stored into the corresponding preset number button.
 - Program Scanning
 Press AMS(MP3) button (9) shortly to scan preset station. When the AMS mode is carry out, "INT" appear on LCD display, the unit scan each stored station for 5 seconds, you also can press the corresponding number button or AMS button. Your desired station will start playing.

STATION STORING
 Press preset button (11-16)
 RADIO MODE.
 M1 ~ M6
 - PRESET MEMORY is loaded when key is pressed for less than 1 second.
 - PRESET MEMORY is saved when key is pressed for longer than 1 sec.

USB/SD OPERATIONS
USB/SD FLASH MP3 Playing:
 PLAY / PAUSE
 Press button (10) pause function is activated. Music track play time INDICATOR flashes.
 Press it again to resume palying, press it more than 1 second is TOP function.
 - Error symbol on the display.

INT
 Press button (11): During INTRON, INT indicator comes on and begins playing the first 10sec of each song, until the last song is played, it begins playing the entire track from where INT started
 Press button (10) pause function is activated. Music track play time INDICATOR flashes.
 Press it again to resume palying, press it more than 1 second is TOP function.
 - Error symbol on the display.

RADIO OPERATIONS
 Press button (11): During INTRON, INT indicator comes on and begins playing the first 10sec of each song, until the last song is played, it begins playing the entire track from where INT started
 Press button (10) pause function is activated. Music track play time INDICATOR flashes.
 Press it again to resume palying, press it more than 1 second is TOP function.
 - Error symbol on the display.

RESET
 RESET button (5) is placed on the housing and must be activated with either a ball point pen or thin metal object. (Do not use sharp object to avoid damaging the unit.). The RESET button (5) is to be activated for the following reasons:
 - Initial installation of the unit when all wiring is completed.
 - All the function buttons do not operate.
 - Error symbol on the display.

BAND SELECTION
 At tuner mode, press BAND button (6) to select the desired band. The reception band will change in the following order:
 FM1 → FM2 → FM3 → MW1 (AM1) → MW2 (AM2)

STATION SELECTION
 During radio mode, Press "SEEK ◀" or "SEEK ▶" buttons shortly to automatically search a station, Press "SEEK ◀" or "SEEK ▶" buttons more than 1 second is operated as manual turning mode.

SELECT TRACKS
 During USB/SD operation, press SEEK "◀" (8) button or SEEK "▶" (7) button to move to the previous track or the following track. Track number shows on display. During USB/SD, hold SEEK "◀" (8) button or SEEK "▶" (7) to fast reverse or fast forward. Music play starts from when you release the button.
 Press preset button (15-16):
 - MP3 MODE : 10 TRACK UP / DOWN is activated.
 When the total track is 10 or less, KEY is inactivated.