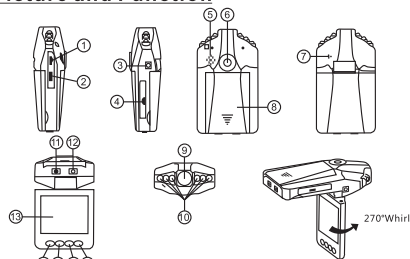


Road Safety Guard

Instruction Manual

Product Picture and Function



1. USB Slot
2. HDMI Slot
3. 5V Direct Current Slot
4. SD/ MMC Card Slot
5. Speaker
6. Mount hole
7. Microphone
8. Battery cover
9. Lens
10. IR LED
11. ON/OFF Power Switch Charging (Red)indicator
12. REC/SNAP Working (Blue)indicator
13. 2.5 inch LCD
14. Menu
15. Down
16. Up
17. Mode Button

Attached Accessories

- Manual
- Mount
- USB Cable
- Car Charger (Include the adaptor 12V/24V transfers to 5V)

Operate

Two Power options:

- A) Use built-in Li-ion battery
DVR can be activated after it has been placed on the vehicle by pressing the **Power Switch (11)** for 3 seconds and turn off by pressing it again.
Charging: connect with USB cable of car charger. The indicator display red and convert to no light when it is full
- B) Connect with Car Charger
DVR will record automatically when the car starts, turn off and save the last file when the car stops.

Recording

DVR will enter into defaulted recording mode when turn it on, the work indicator blinks and indicates it is recording. The recording file is saved in the SD/MMC Card. To stop, press **Recording Button (12)** or ending when car stops, the work indicator won't blinker.

Camera mode

Turn on the DVR and press **Mode Button (17)** to enter into Camera mode. To take photo by pressing **SNAP Button (12)**

Previes and Delete

Turn on the DVR and press **Mode Button (17)** twice to enter into Preview Mode, Press **Up (16)** or **Down (15)** to select the previewed file. If it is video file, it can play or stop by pressing **REC Button**. If you want to delete it, press **Menu Button (14)** to enter into delete mode, and then, select **Singl All** or **Select by REC Button** and **UP/Down** and confirm to delete the file by press **Rec Button**, Also can select **Thumbnail mode** and **volume** (from 1 to 8) under the **Preview Mode**.

Setting the functions:

Turn on the DVR and press **Menu Button** under Video mode or Camera mode to enter into setting interface. Confirm by **REC Button** and select by **Up/Down** for the following setting. Press **Menu Button** again to exit after finished.

A. Video mode:

1. **Size:** Select [1280x960 /720x480/640x480pixels]
2. **Time Stamp:** Select Off/Date only/Date&Time
3. **Motion Detect:** Select On/Off
Note: When select Motion detect function, it will be recording automatically if there is an object movement and stop recording if no movement.
4. **Audio Record:** Select On/Off
5. **Recording time:** select [2/5/15] minute to decide how many time will be storage pre one section.

B. Camera mode:

1. **Size:** 1.3M/VGA

C. Setting Mode:

Whether under Video mode or capture mode, press Menu Button twice to enter into **Setup** interface.

1. **Format:** Select it if you want to format the SD card.
2. **Language:** Select [English/Chinese/Japanese/Russian]
3. **System Reset:** Select [Cancel or Execute system] reset.
4. **Light Frequency:** set [50/60Hz].
5. **Date Input:** Set correct recording Date and time by **Rec Button** and **Up /Down Button**.
6. **IR LED:** Atuo or Off

USB Mode

Connect DVR with computer by USB cable, [My computer] will occur removable disk, the file is stored at Removable Disk/DCIM/100DSCIM. At the moment, the file of the DVR can be downloaded to the computer.

- Note: 1) Please insert the SD/ MMC card before recording.
2) This DVR records in cycle if you choose 2/5/15 minutes as storage time. When the storage medium is full, it will record from the beginning again and erase over the previously recorded material automatically. It will have 3 seconds pause time, and namely the contents in the 3 seconds will not recorded.
3) Because the DVR is DC5V input, please use the attached car charger. It have adaptor 12V/24V transfers to 5V already.

Technical Specifications

- 1) Recording resolution: 1280x960/720x480/640x480 pixels
- 2) Video format: AVI
- 3) Repeat storage by section: 2/5/15 minutes
- 4) Power source: Built-in rechargeable battery or 12V/24V Car Charger
- 5) Supports SD/MMC card (From 1GB up to 32GB)
- 6) Microphone: can record sound
- 7) 2.5 inch LCD: 270° Whirl

Small Tip to Save You Big Headache

A DVR is in a way very similar to a computer. If the DVR hangs itself during operation, please follow the procedures below and most likely the DVR can be re-activated:

DVR will restart after press Reset Hole gently by diameter less than 1mm column.

No further notice will be given for any modification of the technical specification.

Thank you for purchasing Portable DVR from our company. In order to help you operate it correctly, please read this instruction carefully before using.